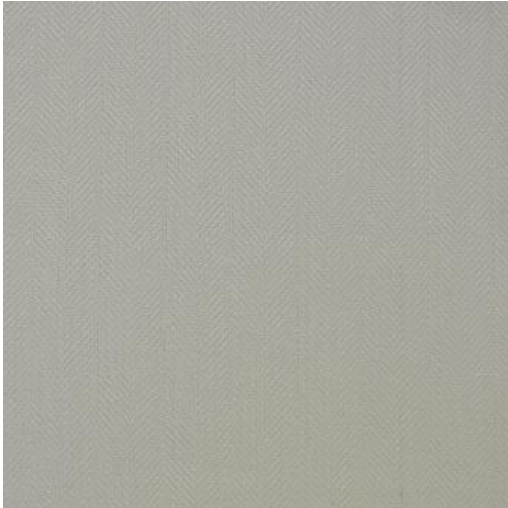


TOMPKINS-ESS

103 ANGEL



PRODUCT INFORMATION

EXCLUSIVE PATTERN AVAILABLE IN 4 COLORS

PATTERN NAME TOMPKINS-ESS

COLOR # 103 ANGEL

PATTERN COMMENT AVAILABLE IN 7 COLOURS **2 YD MINIMUMS-1/2 YARD INCREMENTS ONLY- NO CFA'S

COLOR COMMENT

USAGE Clearance Items Only, Upholstery

WIDTH 56"

REPEAT H-1.75"

CONTENT 100% POLYESTER

CLEANING WASH BELOW 30 RAILROADED

FINISH

NOTES RAILROADED

TESTS 100,000 DOUBLE RUBS NFPA 260 CLASS 1(UFAC) - CAL 117-2013
NFPA 260 CLASS 1(UFAC) - CAL 117-2013

COUNTRY CHINA

WAREHOUSE North CarolinaNorth Carolina