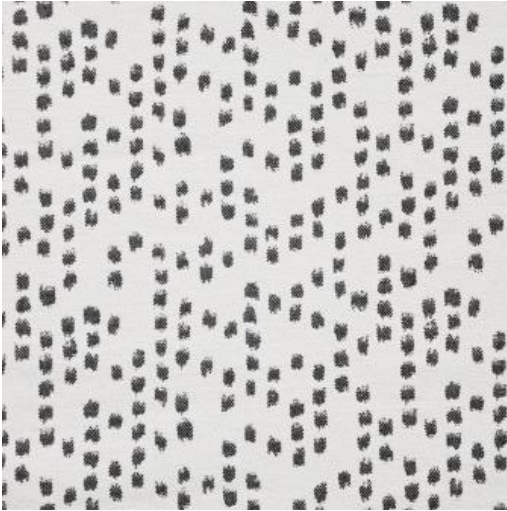


# JEAN PAUL # 613 PANDA



## PRODUCT INFORMATION

EXCLUSIVE PATTERN AVAILABLE IN 4 COLORS

PATTERN NAME **JEAN PAUL**

COLOR **# 613 PANDA**

PATTERN COMMENT EXCLUSIVE PATTERN AVAILABLE IN 6 COLOURS \*\*\* 2 YARD MINIMUMS - 1/2 YARD INCREMENTS ONLY \*\*\*

COLOR COMMENT

USAGE Clearance Items Only, Upholstery

WIDTH 56.5"

REPEAT V-12" H-14.75"

CONTENT 44% POST INDUSTRIAL COTTON/30% POST INDUSTRIAL POLYESTER/ 26% WOOL

CLEANING DRY CLEAN RECOMMENDED

FINISH

TESTS 50,000 DOUBLE RUBS NFPA 260 CLASS 1(UFAC) - CAL 117-2013  
NFPA 260 CLASS 1(UFAC) - CAL 117-2013

COUNTRY USA

WAREHOUSE North CarolinaNorth Carolina