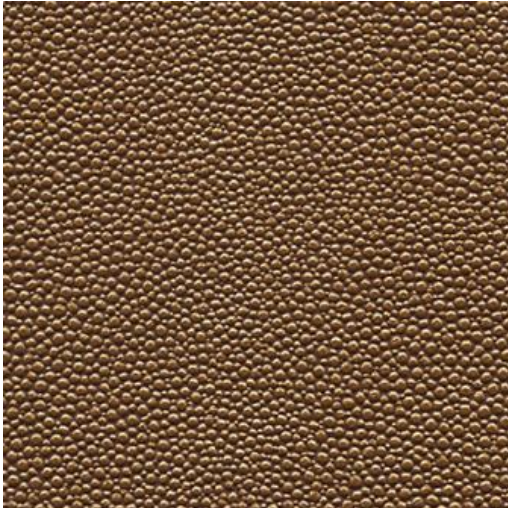


STINGRAY-NJ # 1068 DRIFTWOOD



PRODUCT INFORMATION

EXCLUSIVE PATTERN AVAILABLE IN 11 COLORS

PATTERN NAME STINGRAY-NJ

COLOR # 1068 DRIFTWOOD

PATTERN COMMENT **3 YD MINIMUMS - 1 YARD INCREMENTS ONLY
- NO CFA'S**

COLOR COMMENT

USAGE Upholstery

WIDTH 54"

REPEAT

CONTENT FACE: 100% PVC
BACKING: 65% POLYESTER
35% COTTON

CLEANING REGULAR MAINTENANCE: WIPE WITH DAMP CLOTH & MILD SOAP; WIPE DRY. FOR MORE CLEANING INSTRUCTIONS GO TO MAXWELLFABRICS.COM/RESOURCES

FINISH

TESTS 100,000 DOUBLE RUBS NFPA 260 CLASS I (UFAC), CAL 117-2013, IMO A652 (16) 8.62

COUNTRY KOREA