

Maxwell



Le

Contract
SOLSTICE

2024

BLACKOUT III

The 17 new 3-pass blackout styles of Blackout III, all passing NFPA 701 and CAN ULC S109, make this a truly one-stop compilation. All patterns are 100% blackout, and are diverse in their surface effects. Standout Umbra is double-faced for excellent versatility, with the light blocking layer invisible within the fabric.

Maxwell





Performance Wovens is the ultimate cleanability performance series for residential & crossover contract upholstery. Exclusive, fashion-forward feature designs coordinate & complement a range of small-scale patterns, textures & solids, all styled by color.

All patterns are stocked with either FibreGuard, ALTA, Crypton Home, InsideOut or MaxGuard permanent soil & stain resistant technology. InsideOut patterns have the added benefit of high UV yarns, allowing for use in indoor or outdoor high sun exposure settings, as well as being quick-drying, mildew resistant & cleanable with a dilution of bleach. *Maxwell*

PERFORMANCE *Wovens*



This follow-up book in the wide-width drapery category adds three new constructions. Luca is a 122" heathered effect faux linen; Giorgio is a 118" wide full-bodied cotton-look; and Sandro is a linen-blend semi-sheer in a soft palette of sorbet-inspired shades. Luca and Giorgio cross over from high-end residential settings into hospitality spaces, passing NFPA 701 and CAN ULC S109. *Maxwell*

Wide Width Basics II

KEY LARGO

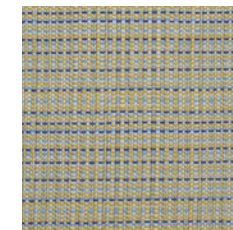
Pomelo & Sapphire



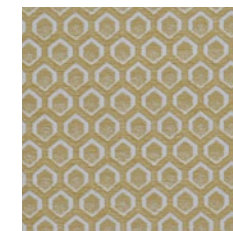
1. DOLCETTO # 602 Sapphire
Performance Wovens
Vol. VII



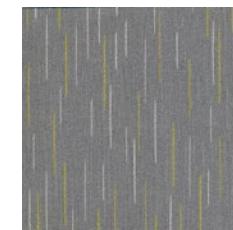
2. PALERMO # 413 Denim
Home & Garden Act VII



3. SEMILLON # 906 Riviera
Performance Wovens
Vol. VII



4. CADBORO # 907 Pomelo
Performance Wovens
Vol. VII



5. GARNER-NJ # 1139 Light Trail
Coated Fabrics



6. GRANGER # 732 Birch
Easy Rider VIII

Click the pattern icon or name to view it on our website

SOUTH BEACH

Triton & Aegean



1. SAVIO # 926 Aegean
Performance Wovens
Vol. VII



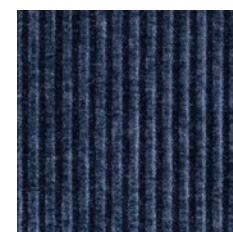
2. ANNEX # 927 Curacao
Performance Wovens
Vol. VII



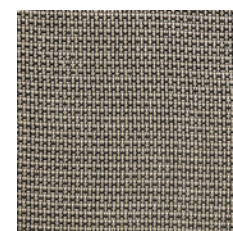
3. ICON # 748 Shoreline
Easy Rider VII



4. LYLE # 750 Lacquer
Easy Rider VIII



5. RAILTOWN # 605 Royal
Performance Wovens
Vol. VII



6. SIDECAR # 411 Oxidize
Sheer Threads

Click the pattern icon or name to view it on our website

MORNINGSIDE

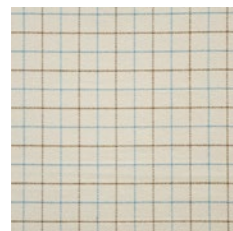
Lagoon & Crème Fraiche



1. AQUITAINE # 940 Powder
Performance Wovens
Vol. VI



2. LACHLAN # 443 Linen
Meanswear
Plaids & Checks



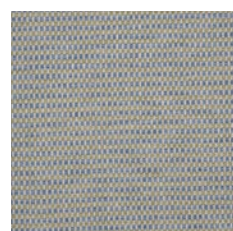
3. KINCAID # 444 Sepia
Meanswear
Plaids & Checks



4. LUCA # 108 Pearl
Wide Width Basics



5. FAIRFIELD # 924 Mist
Performance Wovens
Vol. VII



6. ROCKLAND # 903 Alfresco
Performance Wovens
Vol. VII

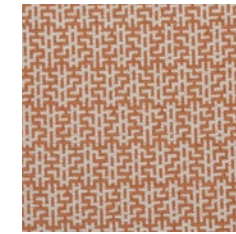


Click the pattern icon or name to view it on our website

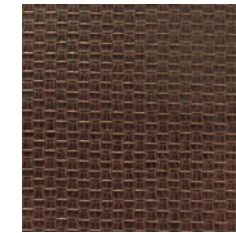
Maxwell

HOT HONEY

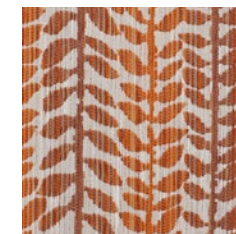
Carmine & Mahogany



1. GARDEN MAZE # 815 Brick
Performance Wovens
Vol. VII



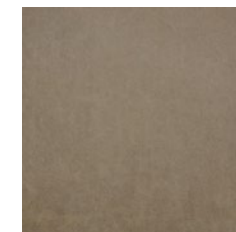
2. BASKETRY # 722 Bittersweet
Easy Rider VIII



3. FERNWOOD # 833 Blood Orange
Performance Wovens
Vol. VII



4. FAÇADE # 739 Nougat
Performance Wovens
Vol. VII



5. PALERMO # 405 Sand
Home & Garden Act VII

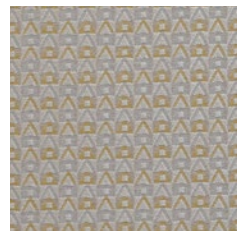


5. OSTIA # 529 Heather
Sheer Paths

Click the pattern icon or name to view it on our website

GOLDSMITH

Fortuny & Forge



1. MOSCATO # 708 Goldbug
Performance Wovens
Vol. VII



2. LINE DANCE # 829 Slipper
Performance Wovens
Vol. VII



3. ROYAL ROADS # 726 Charm
Performance Wovens
Vol. VII



4. PONY EXPRESS # 5007 Flintstone
Easy Rider II, Easy Rider VIII



5. KITSILANO # 746 Elixir
Performance Wovens
Vol. VI

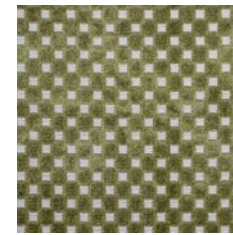
Click the pattern icon or name to view it on our website



Maxwell

CLOVERFIELD

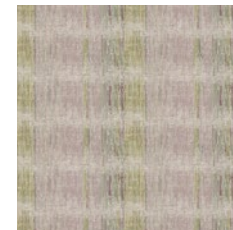
Celadon & Thistle



1. BOLZANO # 633 Olive
Performance Cut Velvets



2. TRUSS-NJ # 987 Marzipan
Coated Fabrics



3. BAROLO # 850 Hydrangea
Performance Wovens
Vol. VII



4. QUEENSWOOD # 911 Celery
Performance Wovens
Vol. VII



5. SIBERIA # 53 Taupe
Siberia, Telafina Season XV



5. LUCA # 124 Fresco
Wide Width Basics II

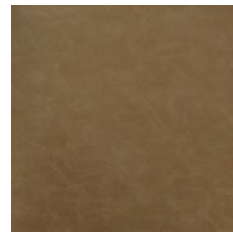
Click the pattern icon or name to view it on our website

RED DELICIOUS

Morello & Cucumber



1. GRANVILLE # 838 Squash
Performance Wovens
Vol. VII



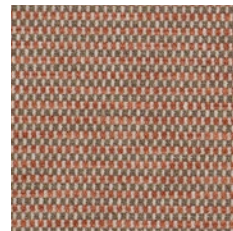
2. GRANGER # 770 Coyote
Easy Rider VIII



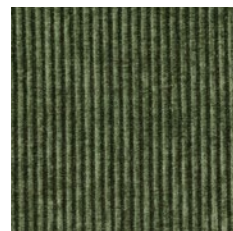
3. MOSCATO # 841 Russet
Performance Wovens
Vol. VII



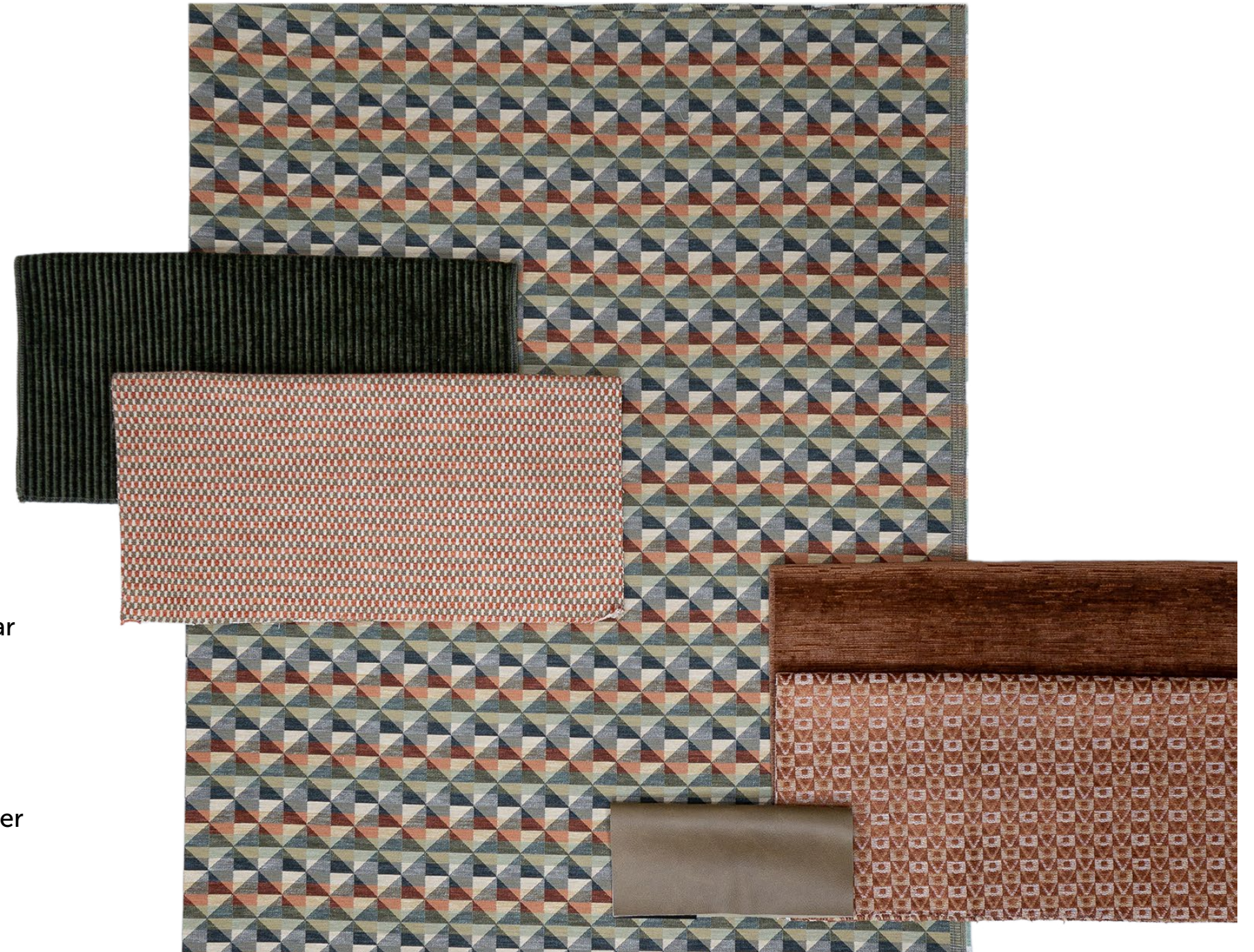
4. ELLIS # 840 Cedar
Performance Wovens
Vol. VII



5. ROCKLAND # 810 Cinnabar
Performance Wovens
Vol. VII



6. RAILTOWN # 914 Cucumber
Performance Wovens
Vol. VII



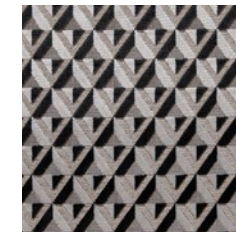
Click the pattern icon or name to view it on our website

GILT & GRAND

Gold & Onyx



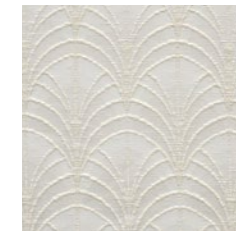
1. FERNANDA # 715 Vermeil
Performance Wovens
Vol. VII



2. VINOVO # 618 Tuxedo
Performance Cut Velvets



3. DOLCETTO # 733 Penguin
Performance Wovens
Vol. VII



4. GRIFFITH # 809 Wheat
Performance Wovens
Vol. VII Tidepool

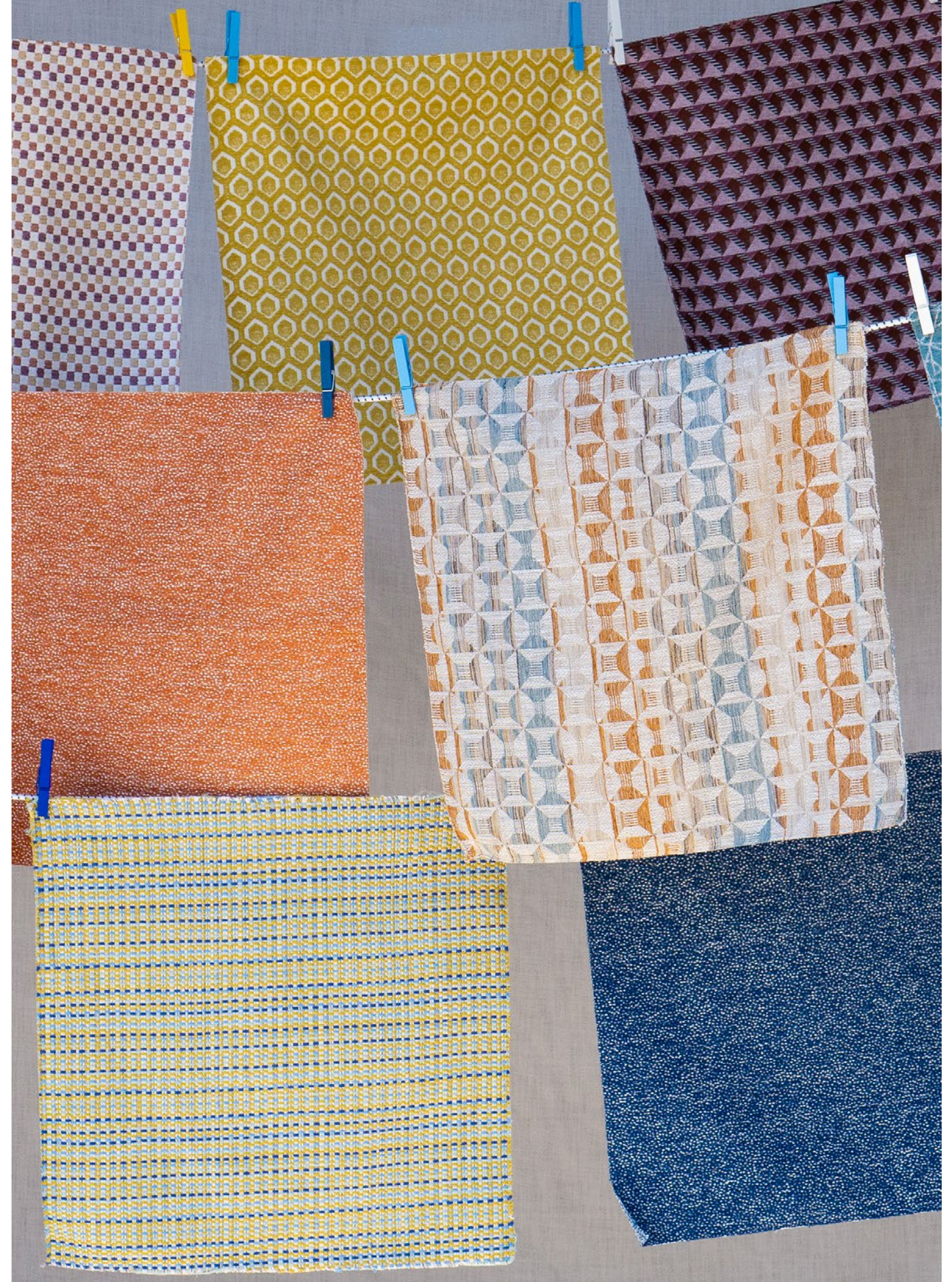


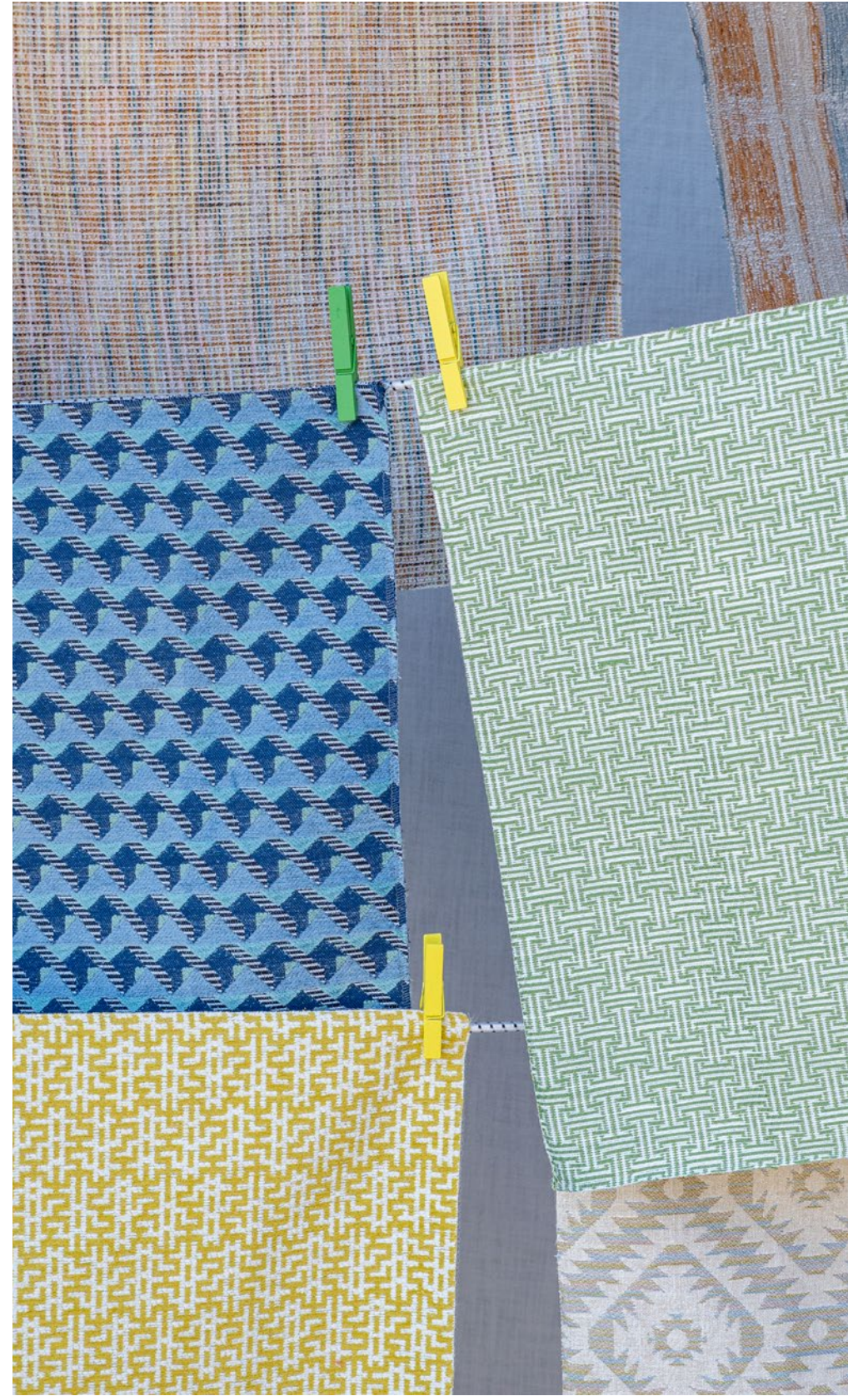
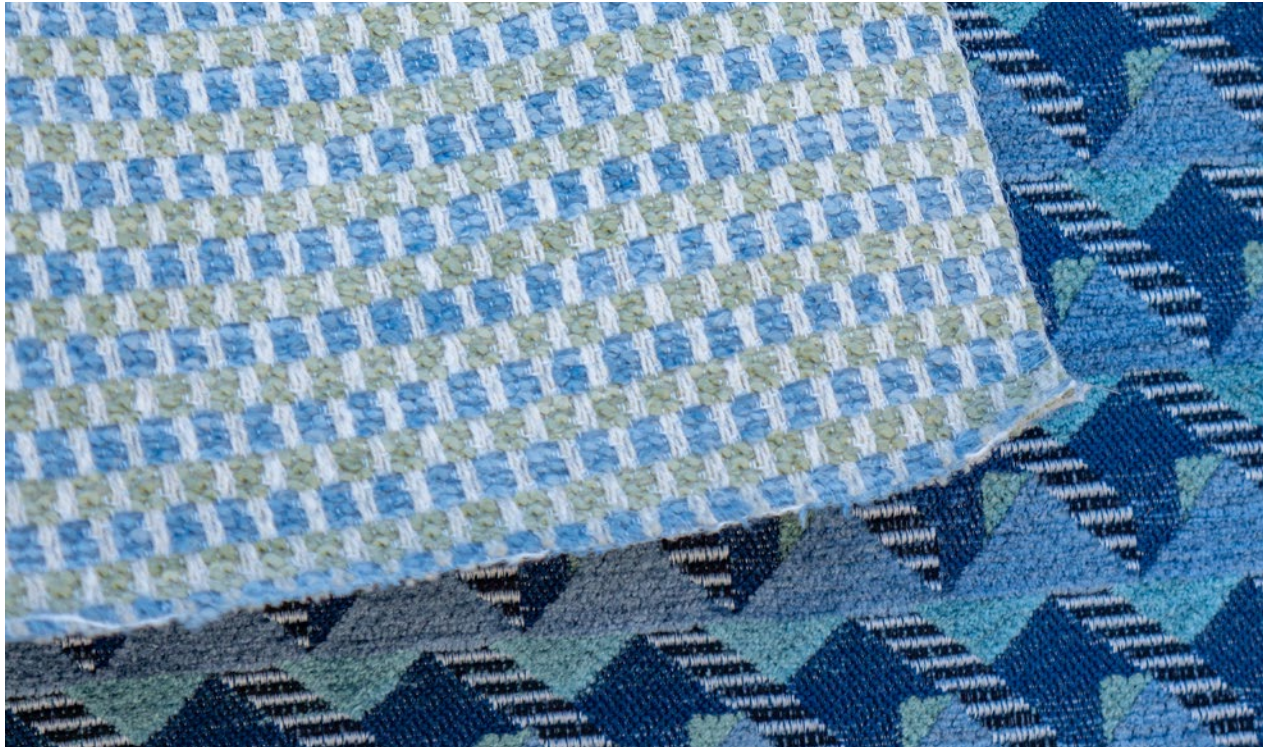
5. ESKER # 635 Sugar
Performance Wovens
Vol. VII



6. TAIPAN # 756 Mushroom
Easy Rider VIII

Click the pattern icon or name to view it on our website



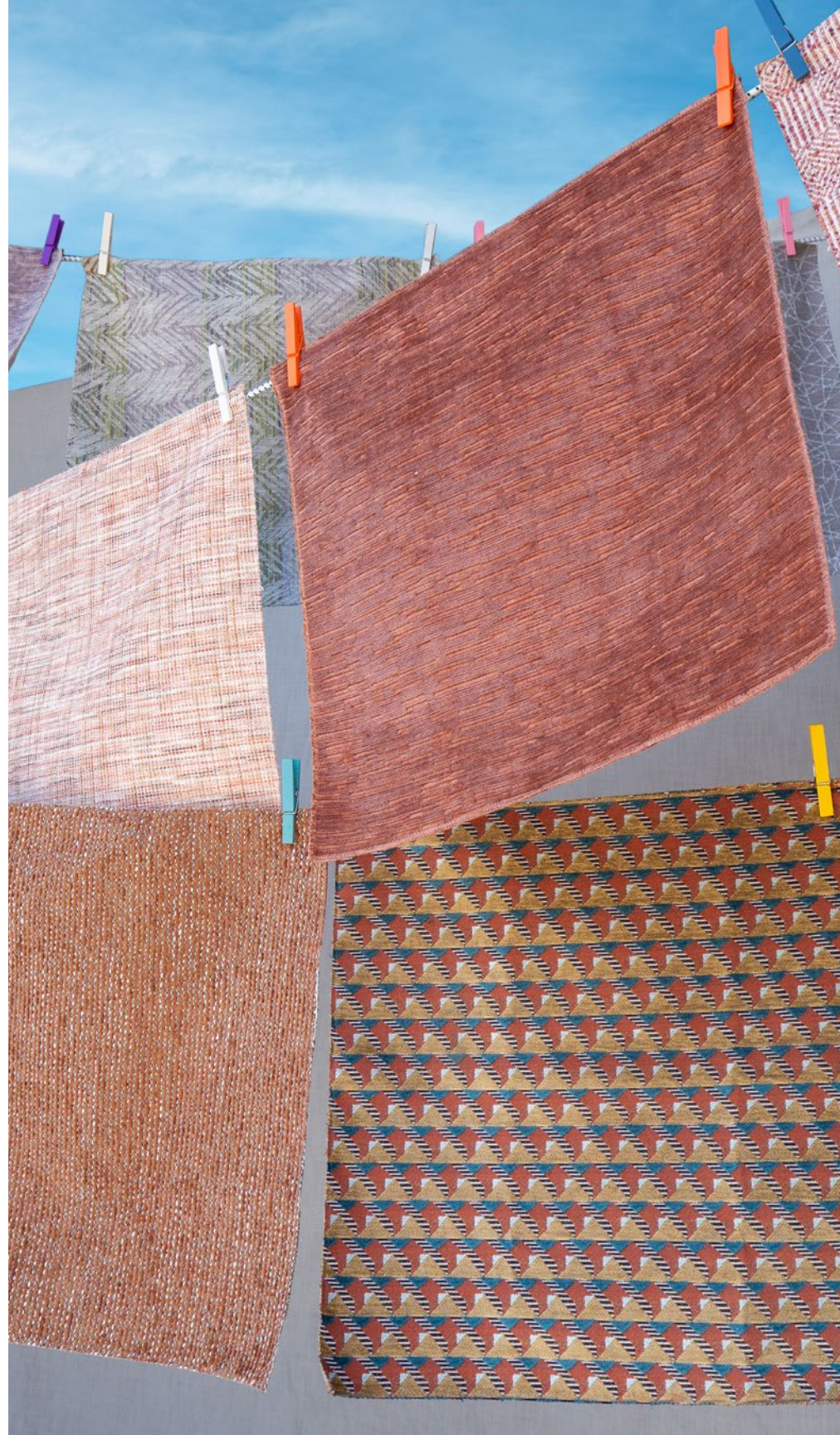


TIDEPPOOL

Maxwell



RHUBARB





GOLD RUSH



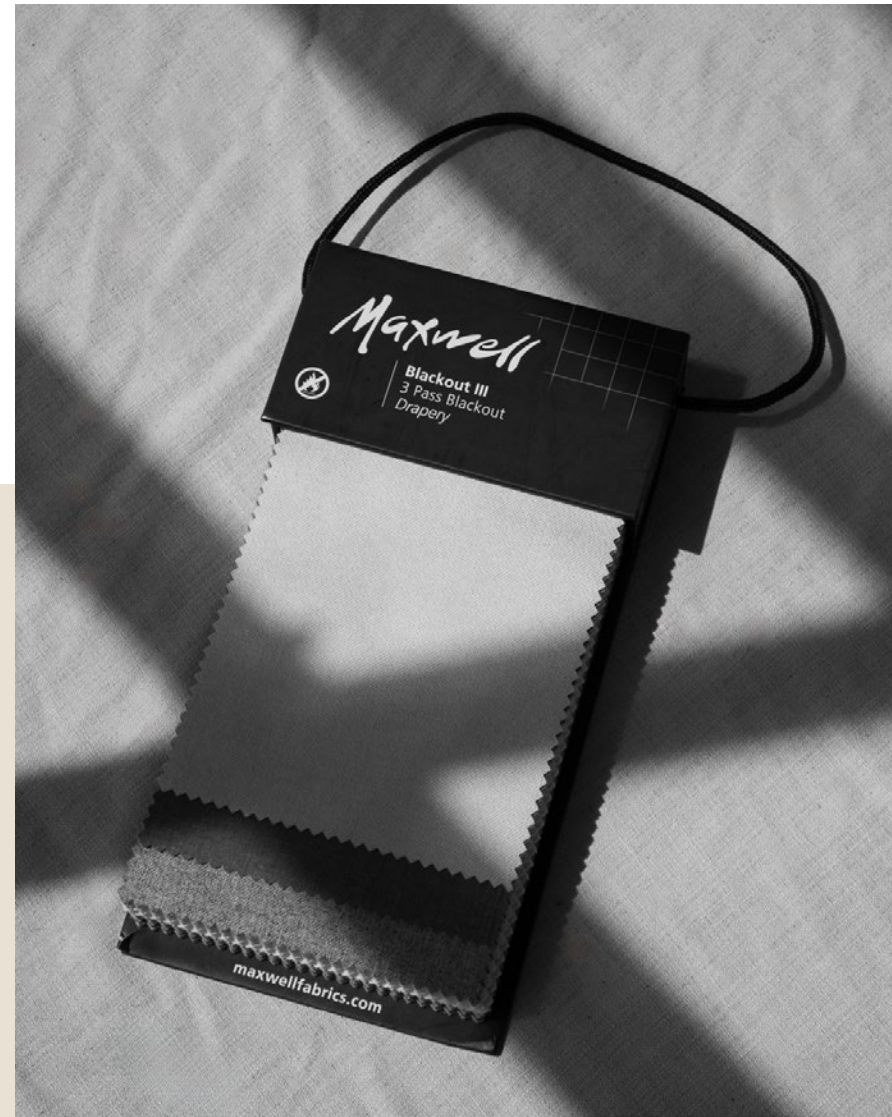
BLUE JAY

Maxwell

Wide Width Basics II



BLACKOUT III



LET US BE YOUR Design Assistant™

Our dedicated in-house design assistant team are unrivaled in the industry. Consider our design assistants your style concierge. If the look you envision for your project is not in our line, our design assistants will work to source or create the perfect textile through our trusted suppliers.



TALK TO THE EXPERTS

Let us assist you by:

- Saving you time
- Offering technical knowledge and suggesting substitutes
- Providing solutions for budgets and lead times
- Stock checking and availability
- Priority sample shipping upon request

CONTACT US

EMAIL

designassistant@maxwellfabrics.com

PHONE

800-663-1159 ext. 1

WEBSITE

maxwellfabrics.com/designassistant

Maxwell