

The background of the cover is a blurred office interior. In the foreground, a large, dark-colored hexagonal frame is visible, containing a light green fabric sample. The text is overlaid on a semi-transparent yellow rectangular area in the center.

# Maxwell

C O N T R A C T

L O O K B O O K

FALL/WINTER 2020

HOSPITALITY HEALTHCARE CONTRACT

[maxwellfabrics.com](http://maxwellfabrics.com) | 800-663-1159 EXT 6 | [contract@maxwellfabrics.com](mailto:contract@maxwellfabrics.com)

# TABLE OF CONTENTS

<u>SENIOR LIVING</u>	<u>3</u>
<u>BLACKOUT</u>	<u>10</u>
<u>FAUX LEATHER</u>	<u>12</u>
<u>VELVET</u>	<u>17</u>



# Maxwell

CONTRACT

SENIOR LIVING

FALL/WINTER 2020

Performance-driven, senior living-capable textiles with the soft hand and styling of residential design. Comfortable and chic, all patterns meet or exceed all Association for Contract Textiles (ACT) performance guidelines for high traffic/ public spaces.

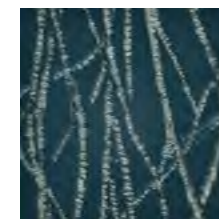
Stocked with ALTA™ Guest Room Seating and available with ALTA™ Senior Living total liquid barrier for ramped-up performance.

800-663-1159 EXT 6 | [contract@maxwellfabrics.com](mailto:contract@maxwellfabrics.com)

[maxwellfabrics.com](http://maxwellfabrics.com)



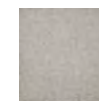
MONITOR  
#903 INDIGO



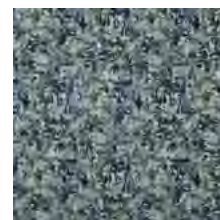
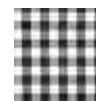
WYTHE  
#943 ENCHANTED



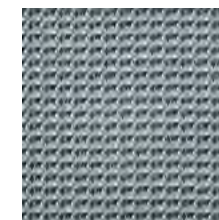
WAYLON  
#904 AZURE



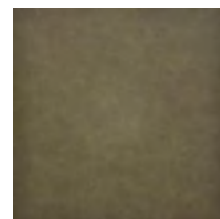
BUFFALO  
#910 LAKE



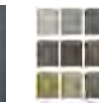
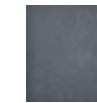
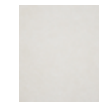
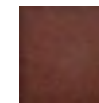
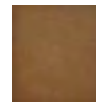
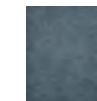
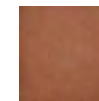
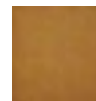
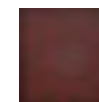
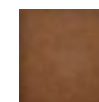
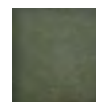
IMPRESSIONIST  
#901 RIVER BED



VERTICES  
#944 BALTIC



TARO  
#215 THYME



## COLOR TRENDS

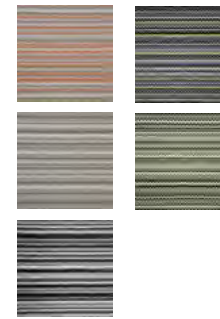
oakmoss, british tan and atlantic blue

## SPECS

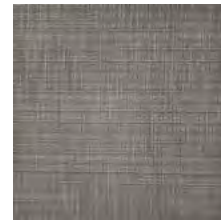
- stocked with ALTA™ Guest Room Seating
- available with ALTA™ Senior Living total liquid barrier / ALTA™ Healthcare
- 30K + double rubs Wyzenbeek
- passes NFPA 260 Class I & CAL 117-2013
- exceeds all ACT performance guidelines for physical properties like pilling & seam slippage



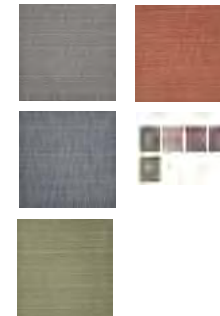
AREZZO  
#709 COCOA



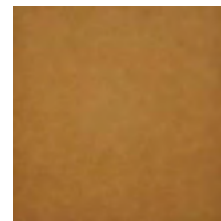
BLINK  
#656 SOAPSTONE



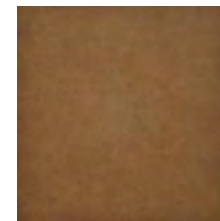
BOBBIN  
#630 SHELL



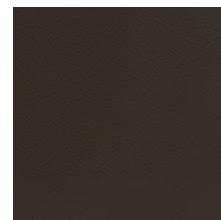
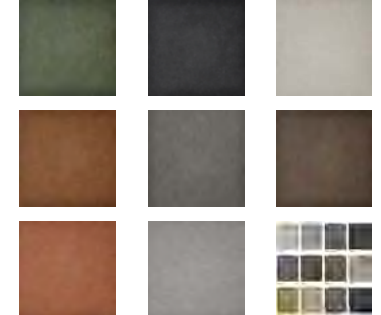
BUFFALO  
#659 DESERT



TARO  
#203 HAY



TARO  
#204 MUSTANG



SCENE  
#723 COCOA

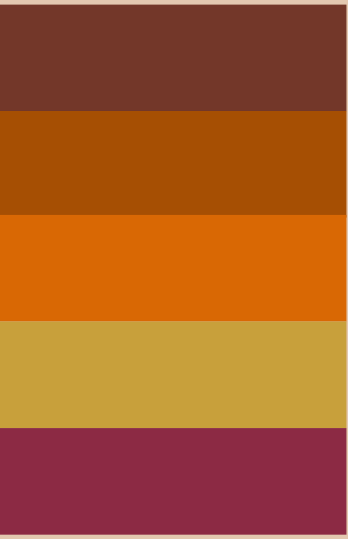


## COLOR TRENDS

carob, dune, bitter chocolate and peanut

## SPECS

- stocked with ALTA™ Guest Room Seating
- available with ALTA™ Senior Living total liquid barrier / ALTA™ Healthcare
- 30K + double rubs Wyzenbeek
- passes NFPA 260 Class I & CAL 117-2013
- exceeds all ACT performance guidelines for physical properties like pilling & seam slippage

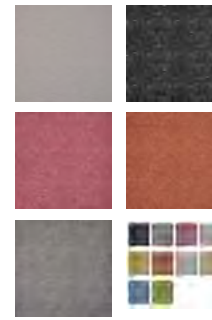


**COLOR TRENDS**  
dragonfruit, satsuma and citron

- SPECS**
- stocked with ALTA™ Guest Room Seating
  - available with ALTA™ Senior Living total liquid barrier / ALTA™ Healthcare
  - 30K + double rubs Wyzenbeek
  - passes NFPA 260 Class I & CAL 117-2013
  - exceeds all ACT performance guidelines for physical properties like pilling & seam slippage



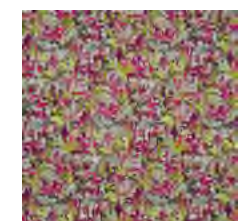
BITSY  
#816 SAFFRON



APFEL  
#820 CAROUSEL



MATINEE  
#734 KUMQUAT



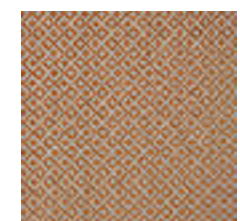
IMPRESSIONIST  
#831 BOYSENBERRY



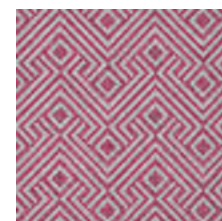
CUBIC  
#815 GOOSEBERRY



CUBIC  
#824 GRAPEFRUIT



CUBIC  
#818 MANDARIN



ONE WAY  
#805 FRUIT PUNCH



### COLOR TRENDS

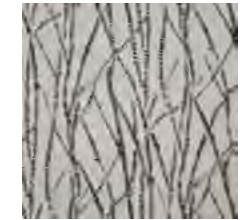
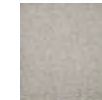
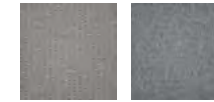
rocksalt, obsidian and birchbark

### SPECS

- stocked with ALTA™ Guest Room Seating
- available with ALTA™ Senior Living total liquid barrier / ALTA™ Healthcare
- 30K + double rubs Wyzenbeek
- passes NFPA 260 Class I & CAL 117-2013
- exceeds all ACT performance guidelines for physical properties like pilling & seam slippage



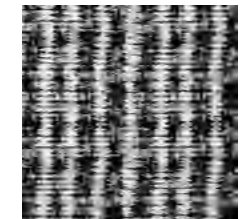
WAYLON  
#615 SLATE



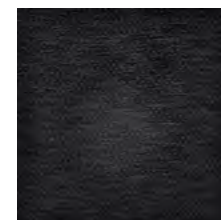
WHYTE  
#608 AFRICAN  
GREY



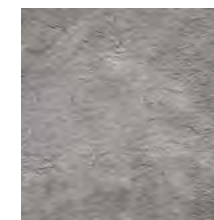
CUBIC  
#948 ASH



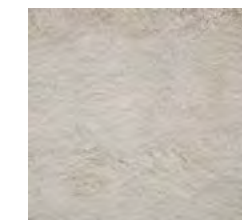
MONITOR  
#637 STATIC



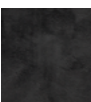
MARS  
#638 WASHED  
BLACK



CRISTOBAL  
#908 LUNA



CRISTOBAL  
#901 COTSWALD





### COLOR TRENDS

palm, lemon verbena and noir green

### SPECS

- stocked with ALTA™ Guest Room Seating
- available with ALTA™ Senior Living total liquid barrier / ALTA™ Healthcare
- 30K + double rubs Wyzenbeek
- passes NFPA 260 Class I & CAL 117-2013
- exceeds all ACT performance guidelines for physical properties like pilling & seam slippage



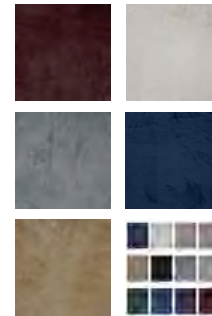
BOBBIN  
#929 OLIVE



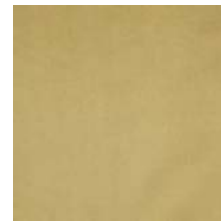
BOTANIST  
#932 PALM



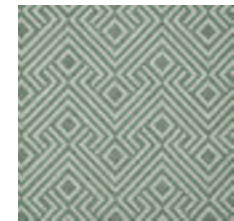
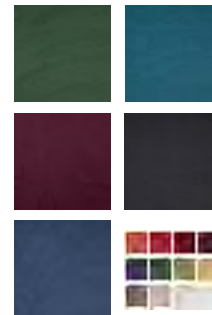
SIBERIA  
#78 EVERGREEN



INTAGLIO  
#822 GOLD



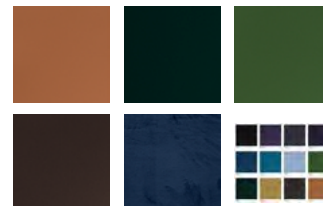
BILLIARD  
#18 HAY



ONE WAY  
#631 PALM



MATINEE  
#740 CHARTREUSE







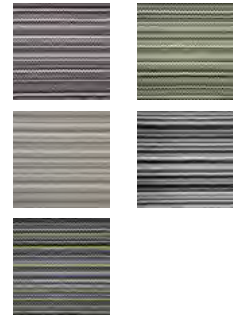
BOBBIN  
#804 BLOOD  
ORANGE



SIDESTEP  
#802 MOROCCO



AREZZO  
#702 SPICE



IPPOLITO  
#801 CHAI



FINAL CUT  
#735 BUTTERNUT



ICON  
#736 REDWOOD



### COLOR TRENDS

saffron, persimmon and oxblood

### SPECS

- stocked with ALTA™ Guest Room Seating
- available with ALTA™ Senior Living total liquid barrier / ALTA™ Healthcare
- 30K + double rubs Wyzenbeek
- passes NFPA 260 Class I & CAL 117-2013
- exceeds all ACT performance guidelines for physical properties like pilling & seam slippage

CLICK THE FABRICS IN THE SCHEME OR THE ICONS TO THE RIGHT TO VIEW AVAILABLE COLORS ONLINE



*Maxwell*

CONTRACT

3 PASS BLACKOUT

FALL/WINTER 2020



CLICK THE FABRIC ICONS TO THE RIGHT  
TO VIEW AVAILABLE COLORS ONLINE



ERSA



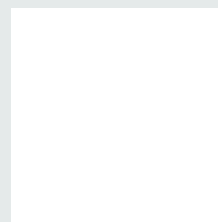
ELARA

IO



CALLISTO

DIA



GANYMEDE

Six blackout textures & solids in a chic menswear-inspired palette of neutrals.

- 100% blackout
- Passes NFPA 701 & CAN ULC S109
- Ultra-drapeable
- 55" wide
- Select patterns available 110" wide for 300-500 yards (MOQ)



*Maxwell*  
CONTRACT

FAUX LEATHER  
FALL/WINTER 2020

# METALLIC



## FEATURED PATTERNS

- Bilbao, Ibiza, Icon, Monaco

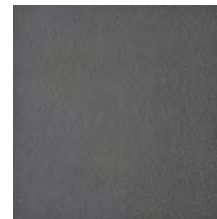
## SPECS

- Stocked with Writer's Block or Sta-Kleen repel & release technology
- Resistant to denim dye transfer, ink & other stains
- Cleanable with a bleach dilution for disinfection
- 100 – 300K double rubs Wyzenbeek
- Passes NFPA 260 Class I & CAL 117-2013
- Exceeds all ACT performance guidelines for strength, abrasion, hydrolysis and UV stability
- HHI (Healthier Hospitals Initiative) compliant

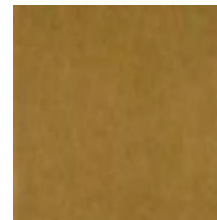
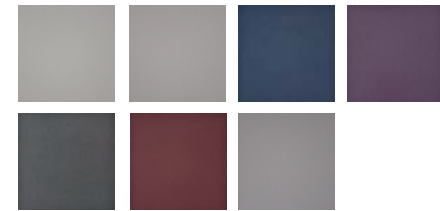
CLICK THE FABRIC IN THE TRAY OR THE ICONS TO THE RIGHT TO VIEW AVAILABLE COLORS ONLINE



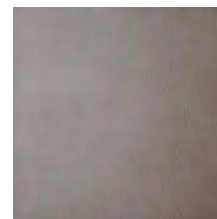
BILBAO



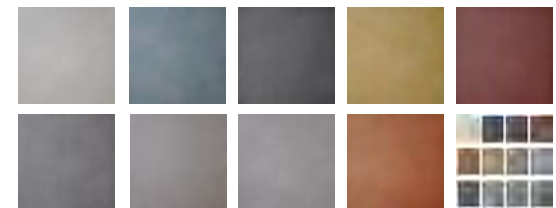
IBIZA



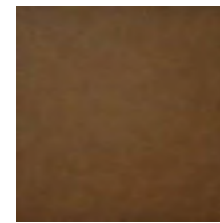
ICON



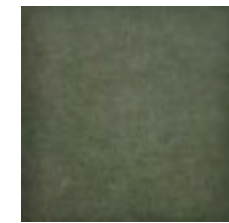
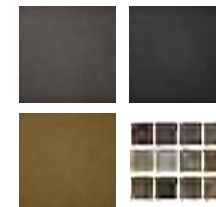
MONACO



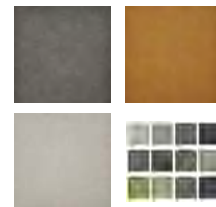
# SKINS



HIDALGO



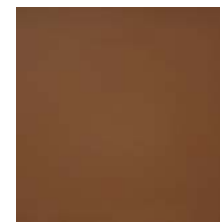
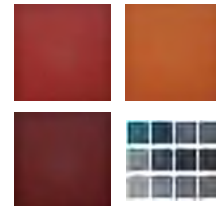
TARO



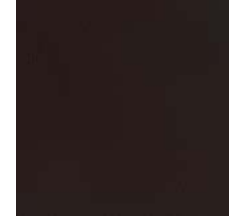
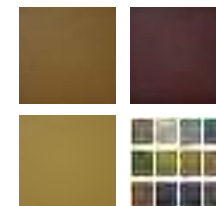
MATINEE



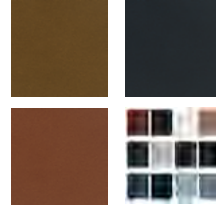
VESPER



PINTO



SCENE



## FEATURED PATTERNS

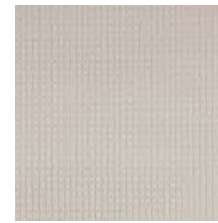
- Hidalgo, Matinee, Pinto, Scene, Taro, Vesper

## SPECS

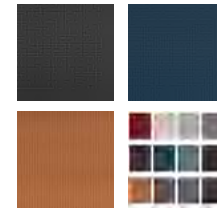
- High performance
- Cleanable with a bleach dilution for disinfection
- 100 – 500K double rubs Wyzenbeek
- Passes NFPA 260 Class I & CAL 117-2013
- Exceeds all ACT performance guidelines for strength, abrasion, hydrolysis and UV stability
- HPD (Health Product Declaration), REACH, RoHS (Restriction of Hazardous Substances) compliant
- PUs are HHI (Healthier Hospitals Initiative) compliant
- CAL AB-2998 compliant (no added flame-retardant chemicals)
- Prop 65 compliant (product does not pose any exposure risks associated with the chemicals in Prop 65)
- Free of: lead/heavy metal, BPA/TRIS/formaldehyde
- PVCs are phthalate free

CLICK THE FABRIC IN THE TRAY OR THE ICONS TO THE RIGHT TO VIEW AVAILABLE COLORS ONLINE

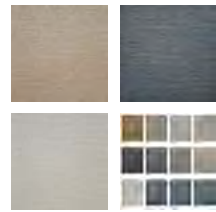
# PATTERN



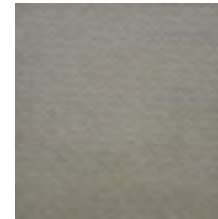
FINAL CUT



UPSTAGE



SPOTLIGHT



VOILA



## FEATURED PATTERNS

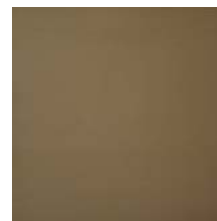
- Final Cut, Spotlight, Upstage, Voila

## SPECS

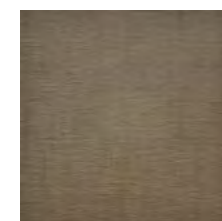
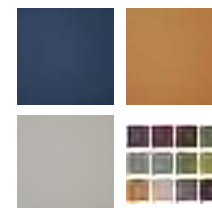
- High performance
- Cleanable with a bleach dilution for disinfection
- 100 – 250K double rubs Wyzenbeek
- Passes NFPA 260 Class I & CAL 117-2013
- Exceeds all ACT performance guidelines for strength, abrasion, hydrolysis and UV stability
- HPD (Health Product Declaration), REACH, RoHS (Restriction of Hazardous Substances) compliant
- PUs are HHI (Healthier Hospitals Initiative) compliant
- CAL AB-2998 compliant (no added flame-retardant chemicals)
- Prop 65 compliant (product does not pose any exposure risks associated with the chemicals in Prop 65)
- Free of: lead/heavy metal, BPA/TRIS/formaldehyde
- PVCs are phthalate free

CLICK THE FABRIC IN THE TRAY OR THE ICONS TO THE RIGHT TO VIEW AVAILABLE COLORS ONLINE

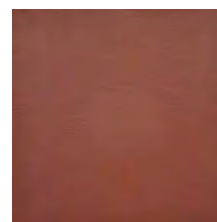
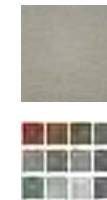
# TEXTURES



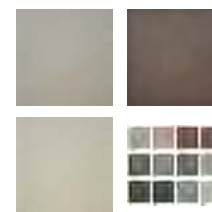
BANDIT



ILLUSION



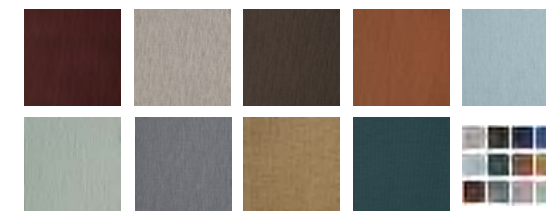
BEWITCHED



LUXOR



CINEMA



## FEATURED PATTERNS

- Bandit, Bewitched, Cinema, Illusion, Luxor

## SPECS

- High performance
- Cleanable with a bleach dilution for disinfection
- 100 – 250K double rubs Wyzenbeek
- Passes NFPA 260 Class I & CAL 117-2013
- Exceeds all ACT performance guidelines for strength, abrasion, hydrolysis and UV stability
- HPD (Health Product Declaration), REACH, RoHS (Restriction of Hazardous Substances) compliant
- PUs are HHI (Healthier Hospitals Initiative) compliant
- CAL AB-2998 compliant (no added flame-retardant chemicals)
- Prop 65 compliant (product does not pose any exposure risks associated with the chemicals in Prop 65)
- Free of: lead/heavy metal, BPA/TRIS/formaldehyde
- PVCs are phthalate free

CLICK THE FABRIC IN THE TRAY OR THE ICONS TO THE RIGHT  
TO VIEW AVAILABLE COLORS ONLINE



A photograph of several rolls of velvet fabric in various shades of red, orange, and pink, arranged diagonally. A semi-transparent white box is overlaid on the left side of the image, containing the text.

*Maxwell*

CONTRACT

VELVET

FALL/WINTER 2020

# BILLIARD



## SPECS

- Exclusive pattern Billiard is available in 25 colorways
- Stocked with FibreGuard Pro total liquid barrier technology
- Anti-microbial & mildew & odor resistant
- Passes 70K double rubs Wyzenbeek
- Passes NFPA 260 CLASS I (UFAC) & CAL 117-2013
- Exceeds all ACT performance guidelines for physical properties like pilling & seam slippage
- Passes Oeko-Tex standard – environmentally safe & free of harmful substances
- 100% polyester



CLICK THE FABRIC ABOVE OR THE ICONS TO THE RIGHT  
TO VIEW AVAILABLE COLORS ONLINE

CONTRACT@MAXWELLFABRICS.COM

# CARLOTTA



## SPECS

- Pattern Carlotta is available in 10 colorways
- Available with ALTA™ Guest Room Seating/ALTA™ Senior Living total liquid barrier / ALTA™ Healthcare
- Passes 60K double rubs Wyzenbeek
- Passes NFPA 260 CLASS I (UFAC) & CAL 117-2013
- 100% polyester



CLICK THE FABRIC ABOVE OR THE ICONS TO THE RIGHT  
TO VIEW AVAILABLE COLORS ONLINE

CONTRACT@MAXWELLFABRICS.COM

# FIRENZE



## SPECS

- Pattern Firenze is available in 40 colorways
- Stocked with ALTA™ Guest Room Seating
- Available with ALTA™ Senior Living total liquid barrier / ALTA™ Healthcare
- Passes 100K double rubs Wyzenbeek
- Passes NFPA 260 CLASS I (UFAC) & CAL 117-2013
- 100% polyester



CLICK THE FABRIC ABOVE OR THE ICONS TO THE RIGHT  
TO VIEW AVAILABLE COLORS ONLINE

CONTRACT@MAXWELLFABRICS.COM

# MATA HARI



## SPECS

- Pattern Mata Hari is available in 14 colorways
- Available with ALTA™ Guest Room Seating/ALTA™ Senior Living total liquid barrier / ALTA™ Healthcare
- Passes 100K double rubs Wyzenbeek
- Passes NFPA 260 CLASS I (UFAC) & CAL 117-2013
- 100% polyester



CLICK THE FABRIC ABOVE OR THE ICONS TO THE RIGHT  
TO VIEW AVAILABLE COLORS ONLINE

CONTRACT@MAXWELLFABRICS.COM

# NFPA 701

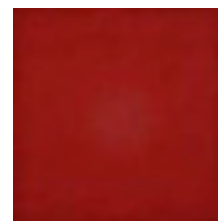


## FEATURED PATTERNS

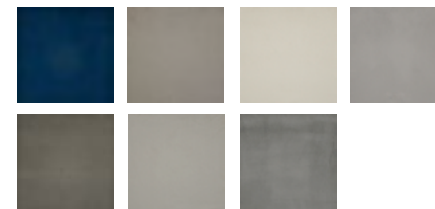
- Bacall, Barrymore, Zurich

## SPECS

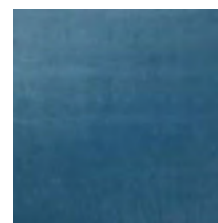
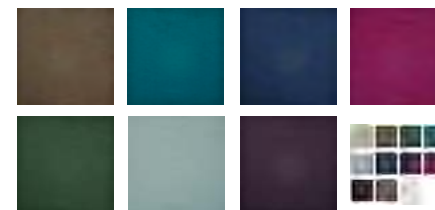
- Suitable for drapery & upholstery usage
- Available with ALTA™ Guest Room Seating/ALTA™ Senior Living total liquid barrier / ALTA™ Healthcare
- Passes 100 – 235K double rubs Wyzenbeek
- Passes NFPA 701, NFPA 260 CLASS I (UFAC) & CAL 117-2013
- 100% polyester



BACALL



BARRYMORE



ZURICH



CLICK THE FABRIC ABOVE OR THE ICONS TO THE RIGHT TO VIEW AVAILABLE COLORS ONLINE

CONTRACT@MAXWELLFABRICS.COM