



ROOM  
*with a View*  
FALL 2024

# *Sheer* GLAM

---

Sheer Glam is this season's decorative wide-width sheer book, bringing a dressed-up feel with touches of shimmer across textural constructions. Widths range from 118 to 130" inches, with all patterns passing NFPA 701.

*Maxwell*



# COLOR THEORY

Color Theory is Maxwell's decorative drapery category, focusing on exclusive prints and embroideries coordinated with curated solids and textures. This season we are introducing three new color books for Volume Eight of the Color Theory series.

## BITTERSWEET

Inspired by the climbing vine of the same name, with its fruit that ranges from carmine to vermilion, flowering in tones of purple.



## ROSEMARY

Herbaceous greens accented with blues, pulling inspiration from juniper and chicory.



## TIGERSEYE

Soft neutrals tahini and flax with deep cognac and ganache, accented with flashes of bright gold and lemon.



Maxwell

# CURLED UP IX

Curled Up is Maxwell's upholstery series of plush & comfortable solids & textures and with Curled Up IX, we introduce a luxe new construction, Adagio, stocked with FibreGuard. Adagio passes NFPA 260 and CAL 117, and exceeds 50,000 double rubs abrasion to cross over into hospitality design.

*Maxwell*



# *Pure &* SIMPLE

---

The seventeenth installment in our Pure & Simple line of drapery solids and textures introduces a cotton blend called Tambo. The color line is soft and easy, coordinating back to the colorways of the seasons, including cloudberry and sage.

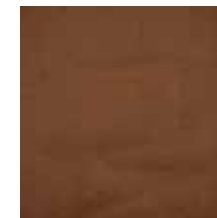
*Maxwell*



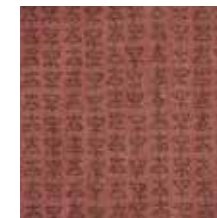
# WANDERLUST



**1. SHATTER # 708 Saffron**  
Color Theory Vol VIII Rhubarb



**2. BARCLAY # 602 Whiskey**  
Color Theory Vol VIII Tigerseye



**3. TIBESTI # 707 Currant**  
Color Theory Vol VIII Rhubarb



**4. XIMENA # 604 Rum**  
Color Theory Vol VIII Tigerseye



**5. VERUSCHKA # 211 Pyrite**  
Sheer Glam

# Agua FRESCA



1. **ORVIETO # 314 Seaglass**  
Color Theory Vol VIII Rosemary



2. **AMPHORA # 324 Agave**  
Color Theory Vol VIII Rosemary



3. **LUXOR # 780 Laurel**  
Easy Rider VIII



4. **NANETTE # 951 Aloe**  
Performance Wovens Vol VI Peachtree



5. **TYRONE # 323 Fen**  
Color Theory Vol VIII Rosemary



# Maison NOUVELLE



1. **BASTILLE # 225 Mushroom**  
Sheer Glam



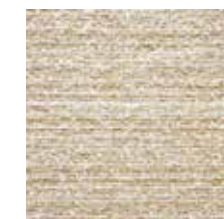
2. **ANISHA # 106 Angora**  
Telafina Season XIV



3. **CHANTERELLE # 605 Cremini**  
Color Theory Vol VIII Tigerseye



4. **BELLUNO # 122 Ash**  
Telafina XVI



5. **CYDNEY # 915 Dunes**  
Telafina XV



# Prairie HOME



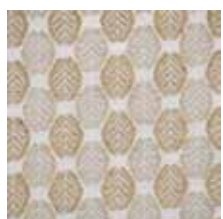
**1. FAVIANNA # 626 Alloy**  
Color Theory Vol VIII Tigerseye



**2. BARCLAY # 05 Flax**  
Color Theory Vol VIII Tigerseye



**3. CHITAL # 644 Ecrú**  
Color Theory Vol VIII Tigerseye



**4. ARBORIO # 614 Wheat**  
Color Theory Vol VIII Tigerseye



**5. GESSO # 615 Parchment**  
Color Theory Vol VIII Tigerseye





# UMBRELLA TREE



1. **XIMENA # 306 Amberjack**  
Color Theory Vol VIII Rosemary



2. **MALIHA # 305 Chicory**  
Color Theory Vol VIII Rosemary



3. **SYLVIA # 237 Denim**  
Sheer Glam



4. **DERUTA # 304 Oceanic**  
Color Theory Vol VIII Rosemary



5. **TARO # 216 Sprout**  
Easy Rider VI

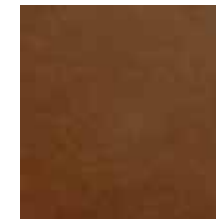
# Copper MOON



1. **FUNNEL # 724 Earthworks**  
Color Theory Vol VIII Bittersweet



2. **CRISTOBAL # 901 Costwold**  
Telafina XV



3. **GRANGER # 716 Saddle**  
Easy Rider VIII



4. **CLOUDCROFT # 801 Sparrow**  
Performance Wovens Vol V Badlands



5. **BARCLAY # 732 Woodrose**  
Color Theory Vol VIII Bittersweet

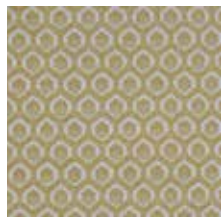


6. **ZORA # 221 Clove**  
Sheer Glam

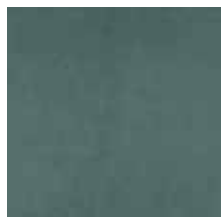
# Palm Springs SPRITZ



1. **PANTILE # 309 Marlin**  
Color Theory Vol VIII Rosemary



2. **CADBORO # 907 Pomelo**  
Performance Wovens Vol VII Tidepool



3. **ICON # 748 Shoreline**  
Easy Rider VII



4. **BELLUNO # 104 Dragonfly**  
Tela fina XVI



5. **BELLUNO # 108 Gold**  
Tela fina XVI



6. **ZAITUN # 512 Surf**  
Pure & Simple XVI



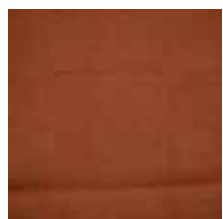
# Carriage HOUSE



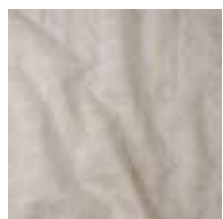
**1. ZELIGE # 702 Wildberry**  
Color Theory Vol VIII Bittersweet



**2. GROUSE # 704 Morocco**  
Color Theory Vol VIII Bittersweet



**3. BARCLAY # 723 Clay**  
Color Theory Vol VIII Bittersweet



**4. JOAN # 208 Palomino**  
Sheer Glam



**5. ALASDAIR # 703 Dahlia**  
Color Theory Vol VIII Bittersweet



# GREENHOUSE



**1. LACROSSE # 607 Fossil**  
Stripes & Checks II



**2. CHAMBORD # 344 Nettle**  
Color Theory Vol VIII Rosemary



**3. FRANGIPANI # 345 Tarragon**  
Color Theory Vol VIII Rosemary



**4. BROLLY # 612 Beach**  
Stripes & Checks II



**5. LUCA # 106 Wool**  
Wide Width Basics II



# MULHOLLAND *Drive*



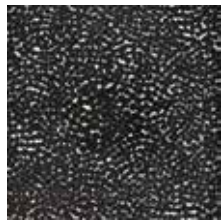
**1. PODIUM # 705 Rhubarb**  
Color Theory Vol VIII Bittersweet



**2. ADAGIO # 805 Poppy**  
Curled Up IX



**3. GRANGER # 712 Bourbon**  
Easy Rider VIII



**4. GUMDROP # 810 Dalmatian**  
Performance Wovens Vol VI Pampas



**5. TAMBO # 518 Matcha**  
Pure & Simple XVII



**6. CALABRIA # 436 Putty**  
Performance Velvets Vol IV





Maxwell











# LET US BE YOUR Design Assistant™

Our dedicated in-house design assistant team are unrivaled in the industry. Consider our design assistants your style concierge. If the look you envision for your project is not in our line, our design assistants will work to source or create the perfect textile through our trusted suppliers.

## TALK TO THE EXPERTS

Let us assist you by:

- Saving you time
- Offering technical knowledge and suggesting substitutes
- Providing solutions for budgets and lead times
- Stock checking and availability
- Priority sample shipping upon request

## CONTACT US

### EMAIL

[designassistant@maxwellfabrics.com](mailto:designassistant@maxwellfabrics.com)

### PHONE

800-663-1159 ext. 1

### WEBSITE

[maxwellfabrics.com/designassistant](https://maxwellfabrics.com/designassistant)

*Maxwell*

