



Coastal Echoes

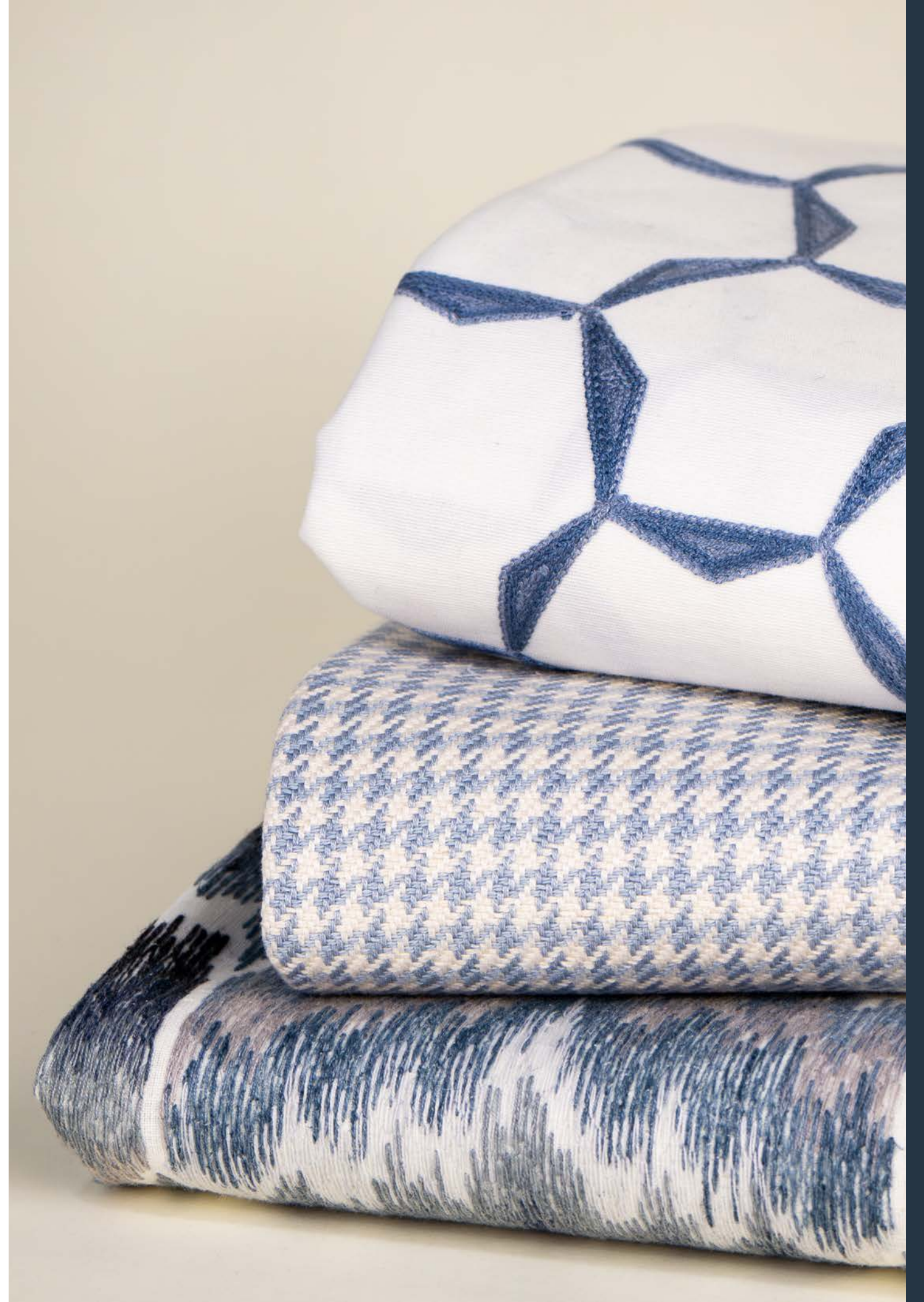
SPRING 2025

Woven by the Coast

This season, our collection is inspired by the serenity of the seaside, capturing the textures and motifs found in nature to bring a sense of tranquility into the home. Sweeping coastal vistas and lush landscapes inform a palette of soothing hues, complemented by natural materials that enhance the collection's organic appeal.

Painterly prints, intricate embroideries, and artisanal woven techniques come together in harmonious color combinations, evoking the effortless beauty of handcrafted design.

Maxwell



Pure & Simple

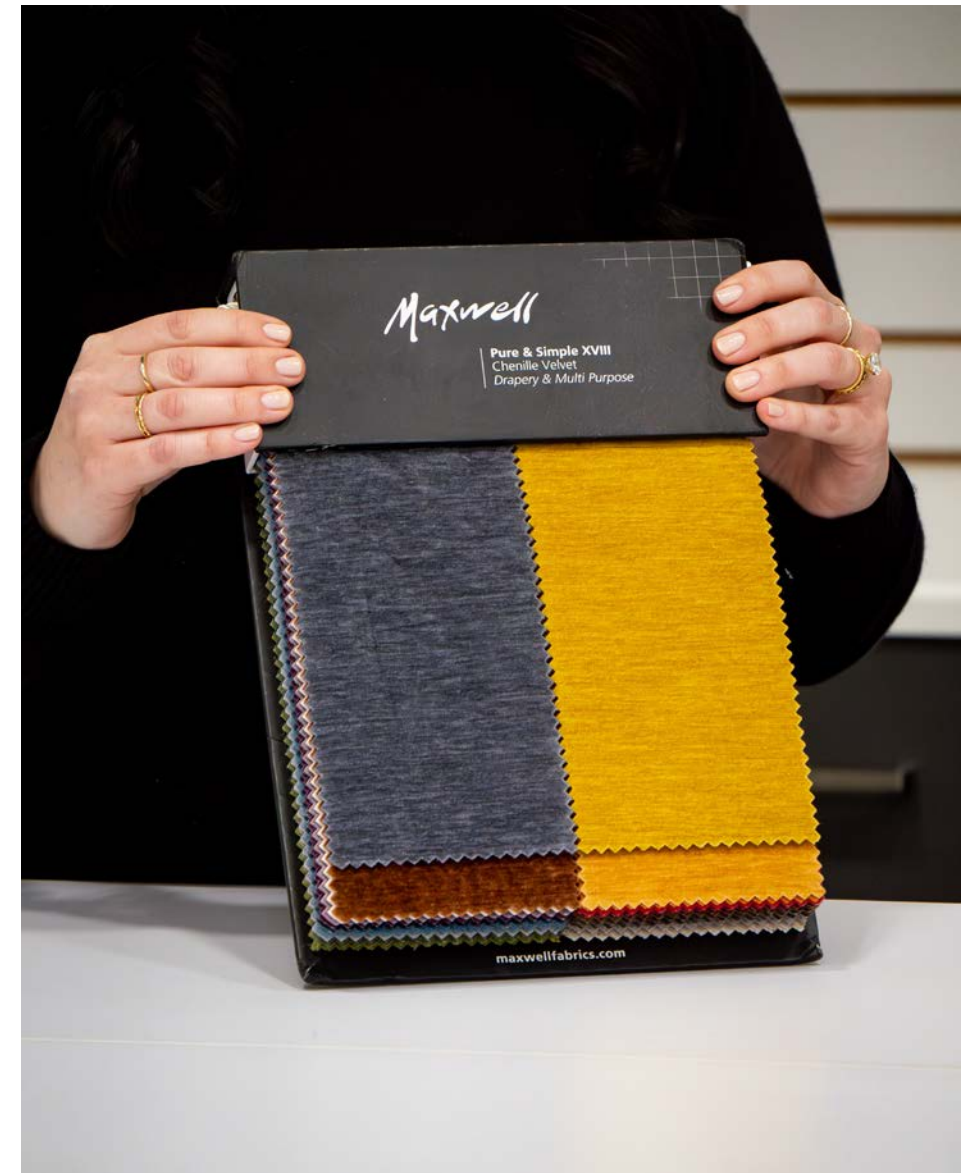
The latest addition to our Pure & Simple collection, RAVE introduces a rich selection of plush chenille with a beautifully soft hand and elegant drape. Designed for versatility, this luxurious fabric is available in over 40 stunning colorways—from timeless neutrals to bold jewel tones and contemporary trend shades—offering endless possibilities for refined interiors.

Maxwell



XVIII





COLOR THEORY IX

Maxwell's Color Theory series celebrates decorative drapery and multi-purpose fabrics, featuring exclusive prints and embroideries thoughtfully layered with stripes, checks, solids, and textures. For Volume Nine, we introduce three new books, each offering a fresh perspective on color, pattern, and versatility—designed to inspire dynamic and beautifully curated interiors.



Maxwell

COLOR THEORY IX

BIRCHBARK

A sophisticated exploration of neutrals, Birchbark balances snow whites and platinum greys with deeper shades of graphite, steel, and black. This palette ranges from soft and airy to rich and dramatic.









COLOR THEORY IX PACIFIC

A rich exploration of blue, Pacific captures the depth and versatility of this timeless hue. The palette moves from bold indigo and navy to midrange denim and lagoon, before softening into mist and sky blues—offering a harmonious balance of depth and serenity.

Maxwell





COLOR THEORY IX

MARBLE

A refined destination for classic neutrals, Marble features timeless shades of Ivory and Alabaster, seamlessly transitioning into warm hues of Sand and Flax. The palette is grounded by cool undertones, including Pumice and Truffle, creating a versatile and elegant foundation for any space.







V&A DECORATIVE PAPERS III

The third exclusive collaboration between 1838 Wallcoverings and the world-renowned Victoria and Albert Museum, London. Decorative Papers III reimagines historic artworks with a timeless elegance, blending heritage craftsmanship with contemporary innovation to create luxuriously crafted wallcoverings.



GOLDENROD



1. **GIVERNY # 424 Talc**
Color Theory Vol. IX Birchbark



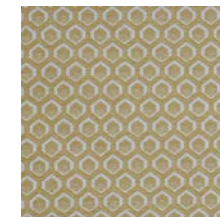
2. **GROUSE # 302 Fern**
Color Theory Vol. VIII Rosemary



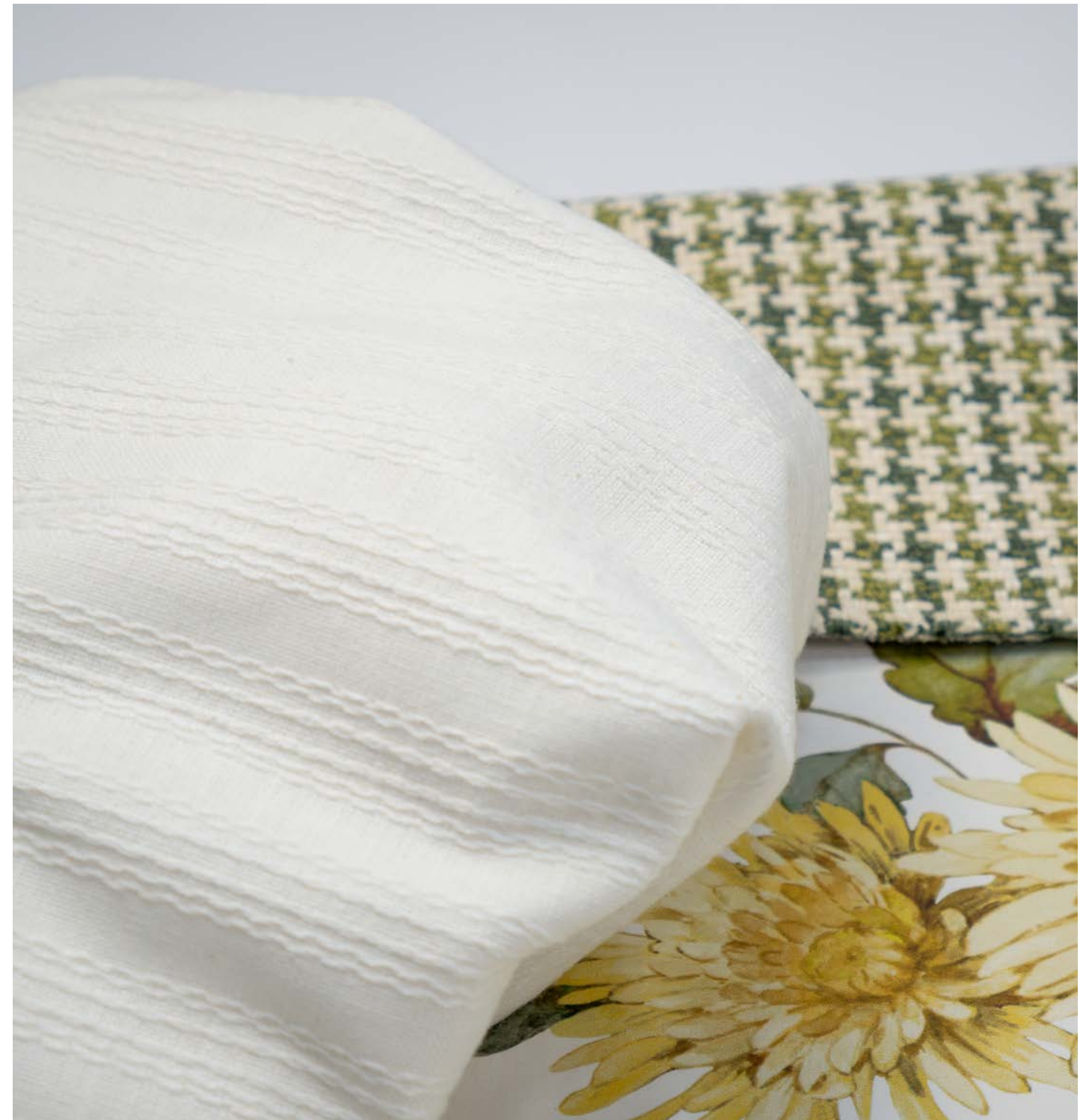
3. **Charlotte # 01 Primrose**
1838 Wallcoverings - V&A III



4. **RAVE # 622 Peridot**
Pure & Simple XVIII



5. **CADBORO # 907 Pomelo**
Performance Wovens Vol. VII Tidepool





ROLLING FOG



1. WASHI # 542 Ibis
Sheer Craft



2. ADORN # 409 Platinum
Color Theory Vol. IX Birchbark



3. TURTLEDOVE # 404 Slate
Color Theory Vol. IX Birchbark



4. MANITOBA # 150 Stream
Color Theory Vol. IX Pacific



5. REGALIA # 151 Water
Color Theory Vol. IX Pacific



6. RAVE # 615 Gull
Pure & Simple XVIII





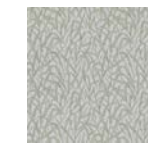
DRIFT WOOD



1. DIYALA # 913 Cameo
Telafina Season XV



2. TARO # 218 Trail
Easy Rider VI



3. ORNAMENTAL GRASSES # 02 Natural
1838 Wallcoverings - V&A III



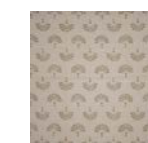
4. BELLUNO # 101 Greyhound
Telafina Season XVI



5. CRISTOBAL # 903 Cloud
Telafina Season XV



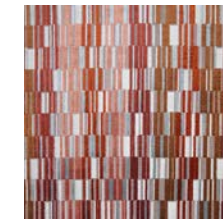
6. RAVE # 548 Vanilla
Pure & Simple XVIII



7. POPINJAY # 215 Natural
Color Theory Vol. XI Marble



SEDONA SUNSET



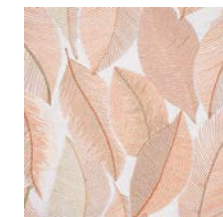
1. **TIRANO # 642 Tiger Lily**
Performance Cut Velvets



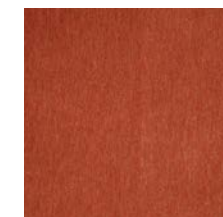
2. **BARCLAY # 602 Whiskey**
Color Theory Vol VIII Tigerseye



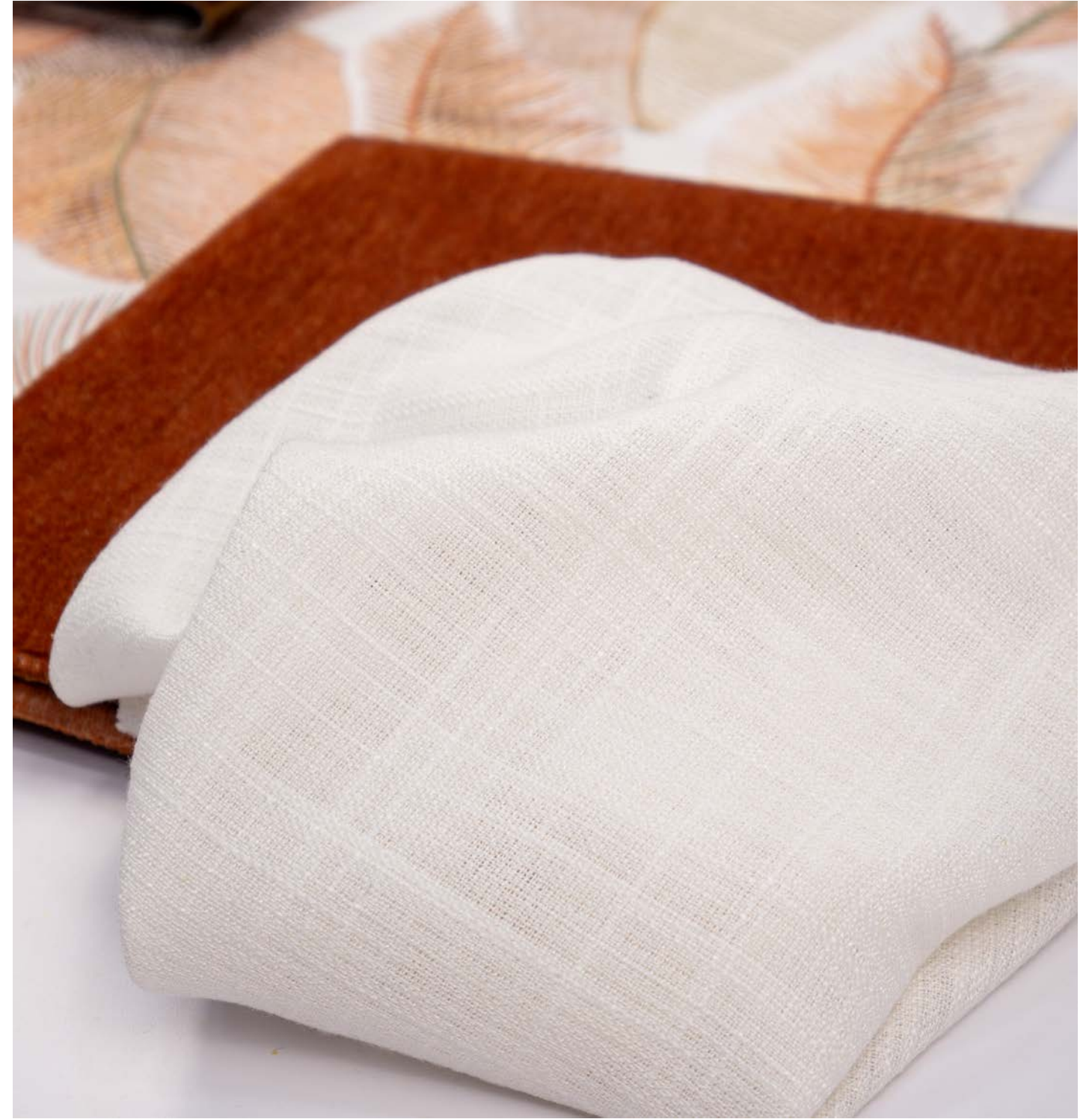
3. **CHARTER # 428 Flour**
Color Theory Vol. IX Birchbark



4. **MALIHA # 701 Cloudberry**
Color Theory Vol. VIII Bittersweet



5. **BELLUNO # 110 Blood Orange**
Telafina Season XVI



CHERRY BLOSSOM



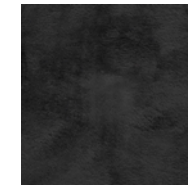
1. **BENVOLIO # 621 Cream**
Sheer Textures



2. **RAVE # 643 Buttercream**
Pure & Simple XVIII



3. **STRATUS # 04 Alabaster**
1838 Wallcoverings - V&A III



4. **CRISTOBAL # 902 Puli**
Telafina Season XV



5. **BARCLAY # 732 Woodrose**
Color Theory Vol. VIII Bittersweet



6. **XIMENA # 201 Mustang**
Color Theory Vol. XI Marble



TIDEWATER



1. **DORMER # 101 Delft**
Color Theory Vol. IX Pacific



2. **PALMETTE # 02 Blue Hue**
1838 Wallcoverings - V&A III



3. **RAVE # 607 Midnight**
Pure & Simple XVIII



4. **ORVIETO # 109 Danube**
Color Theory Vol. IX Pacific



5. **PERLINO # 143 Caribbean**
Color Theory Vol. IX Pacific



6. **BOLZANO # 626 Odyssey**
Performance Cut Velvets



LET US BE YOUR Design Assistant™

Our dedicated in-house design assistant team are unrivaled in the industry. Consider our design assistants your style concierge. If the look you envision for your project is not in our line, our design assistants will work to source or create the perfect textile through our trusted suppliers.



TALK TO THE EXPERTS

Let us assist you by:

- Saving you time
- Offering technical knowledge and suggesting substitutes
- Providing solutions for budgets and lead times
- Stock checking and availability
- Priority sample shipping upon request

CONTACT US

EMAIL

designassistant@maxwellfabrics.com

PHONE

800-663-1159 ext. 1

WEBSITE

maxwellfabrics.com/designassistant

Maxwell